

MXpression

Tips & Tricks I

Working with Panzer Putty



Removing Putty from the Model

Take a large piece of Panzer Putty

Remove Panzer Putty from model with a stippling motion.

Be careful not to break off tiny parts.

When leaving the Panzer Putty on for too long it will stick very tight!



Cutting Panzer Putty



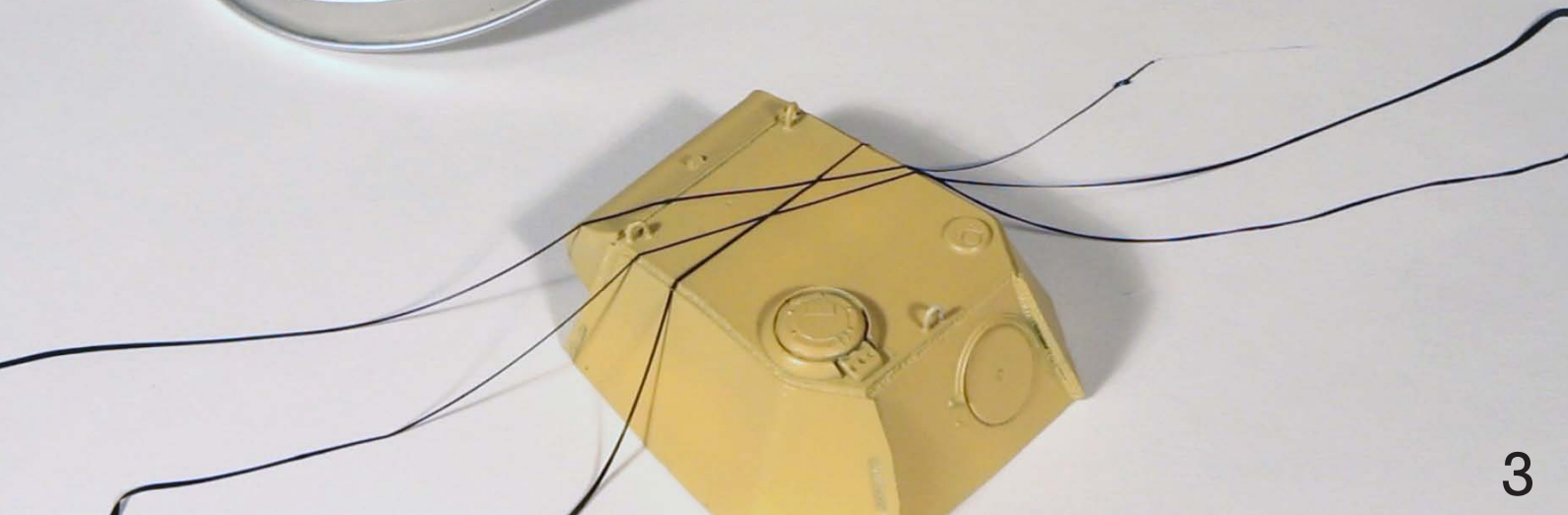
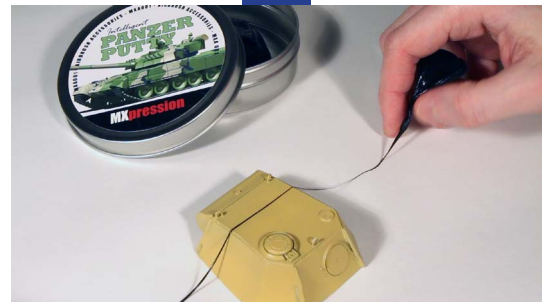
Making Thin Lines

Take a small piece of Panzer Putty.

Slowly pull it to a thin strip and lay it on your model.

Repeat this until you are content with the result.

Let the strings rest for some minutes so they adhere better to the surface.



Soft Edge - Hard Edge

Airbrushing on a round Panzer Putty object will create soft edge camouflage spots on your model.

Airbrushing on a thin and flat Panzer Putty object will create hard edge camouflage spots on your model.

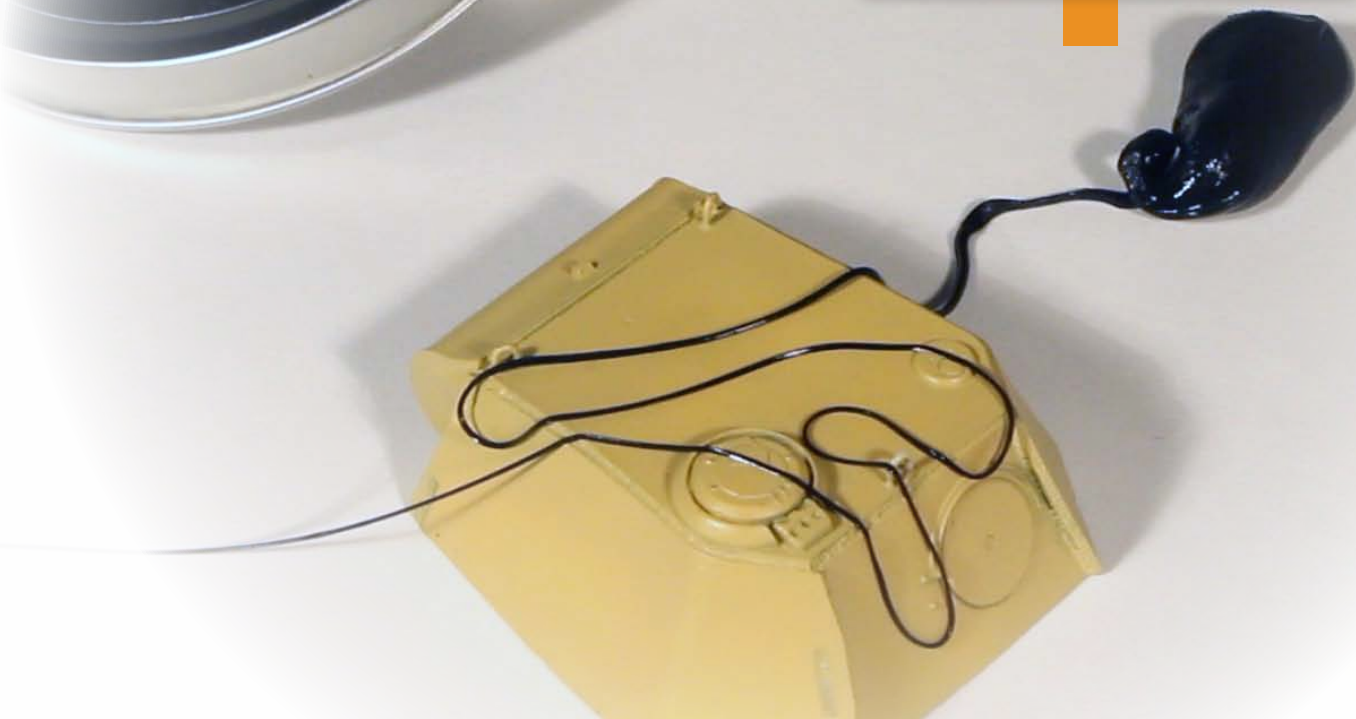


Creating Curves - Part I

Take a piece of Panzer Putty.

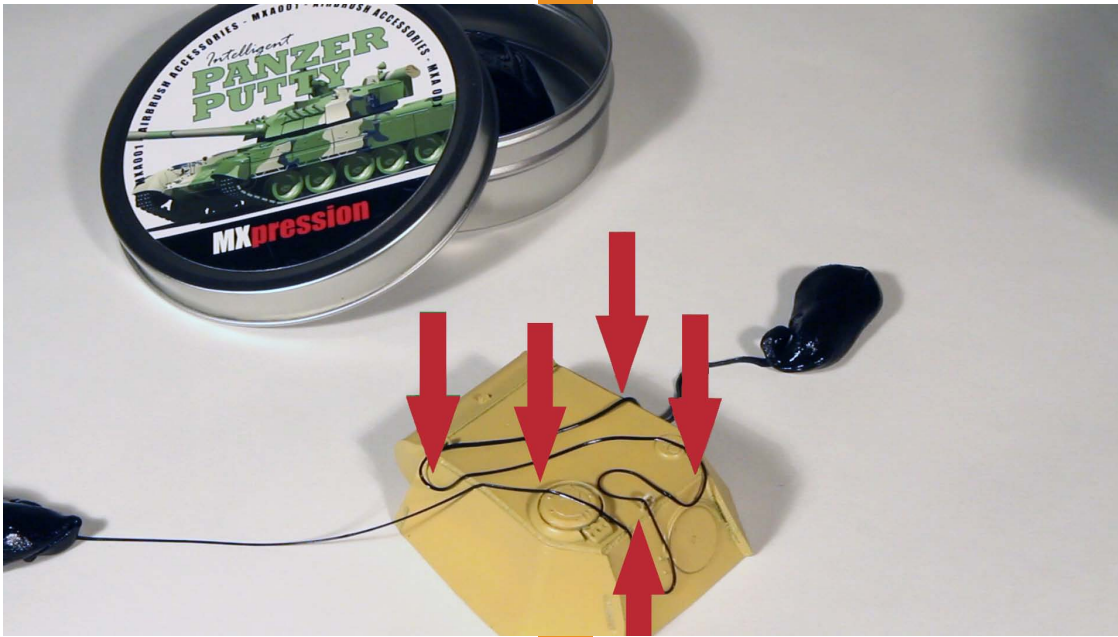
Slowly pull it to a long string and lay it in curves on your model.

Stop when you like the result.

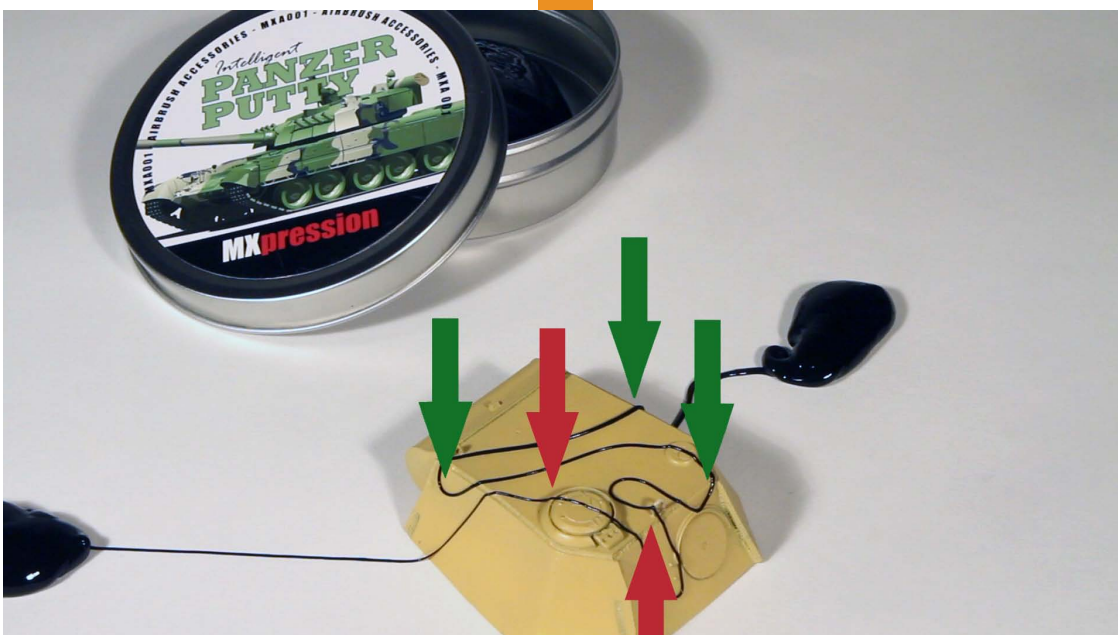


Creating Curves - Part II

Some parts of the Panzer Putty are not sitting on the surface yet.



After a few minutes of waiting, the Panzer Putty is settling to the surface.



Creating Curves - Part III

In areas where the Panzer Putty does not settle after a few minutes, you can easily push it down with a clean and small tool.

Be careful that the Panzer Putty does not stick to the tool.

